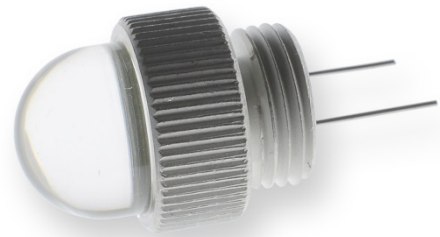




JET-730-10

- **Single Chip Design**
- **730 nm, 130 mW**
- **Ultra Narrow Beam Angle**
- **Homogeneous Square Beam Pattern**



Description

JET-730-10 is a single chip IR LED emitter, utilizing a single high power chip die with a clear epoxy lens offering **ultra low divergence beam** of perfectly square proportions. It features a full metal submount with **M12x1 thread** for convenient installation and ideal heat dissipation

Maximum Ratings

| Parameter | Symbol | Values | | Unit |
|-----------------------|--------------|--------|------|--------------|
| | | Min. | Max. | |
| Thermal Power | P_T | | 1200 | mW |
| Operating Current | I_F | | 500 | mA |
| Reverse Current (10V) | I_R | | <5 | μ A |
| Operating Temperature | T_{CASE} | - 20 | + 65 | $^{\circ}$ C |
| Storage Temperature | T_{STG} | - 40 | + 85 | $^{\circ}$ C |
| Soldering Temperature | T_{SOLDER} | | 260 | $^{\circ}$ C |

Electrical Characteristics ($T_{CASE} = 25^{\circ}$ C, $I_F = 500$ mA)

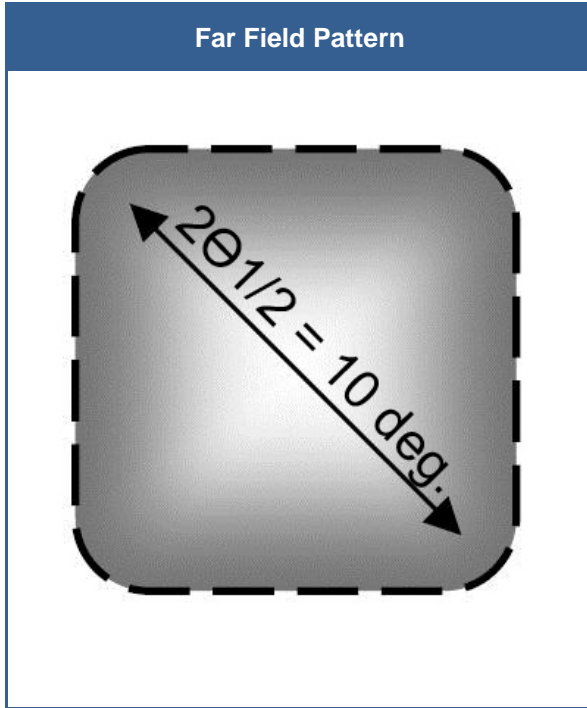
| Parameter | Symbol | Min. | Values | | Unit |
|------------------------|------------------|------|--------|------|------|
| | | | Typ. | Max. | |
| Emission Wavelength | λ_{peak} | | 730 | | nm |
| Optical Output Power | P_O | | 130 | | mW |
| Spectral Width (FWHM) | $\Delta\lambda$ | | 25 | | nm |
| Operating Voltage | V_F | | 1.9 | | V |
| Beam Divergence (FWHM) | θ | | 10 | | deg |
| Thermal resistance | K/W | | 13 | | |
| Rise/Fall time | t_R/t_F | | 30/40 | | ns |



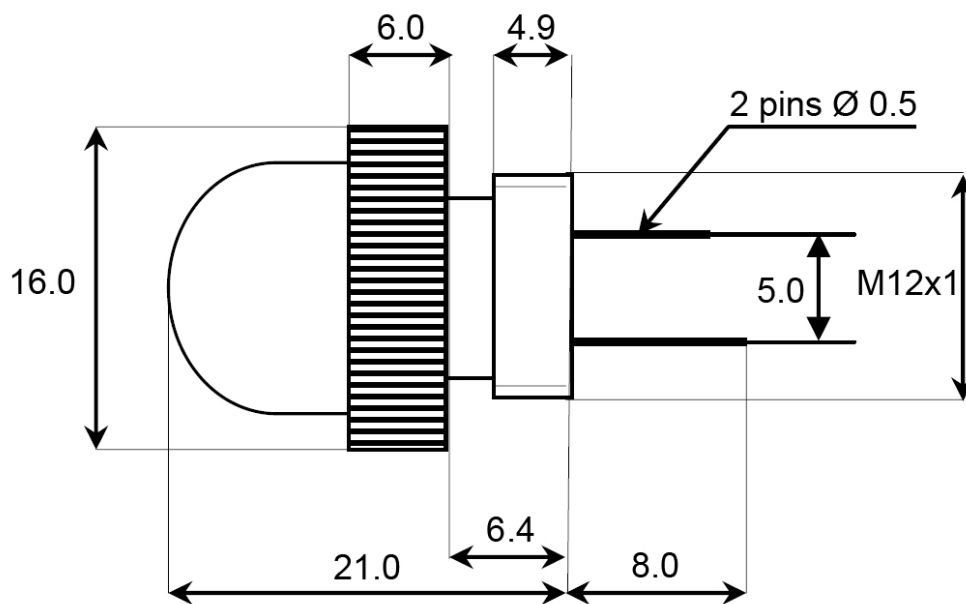


Optical Characteristics

Far Field Pattern



Drawing



Dimensions in mm